

FOX POINT
BAYSIDE SCHOOL DISTRICT





Academic Data Review

Strategic Plan Pillars



1
Engaging Academic
Curiosity

2
Fiscal and Facilities
Stewardship

3
Mental and Personal
Wellness

4
Community
Engagement and
Partnerships

5 Diversity, Inclusion and Belonging

Pieces of the Whole



Academic Achievement

One piece of the puzzle;
includes academic achievement
in English/Language Arts, Math,
Science and Social Studies.



Personal Development

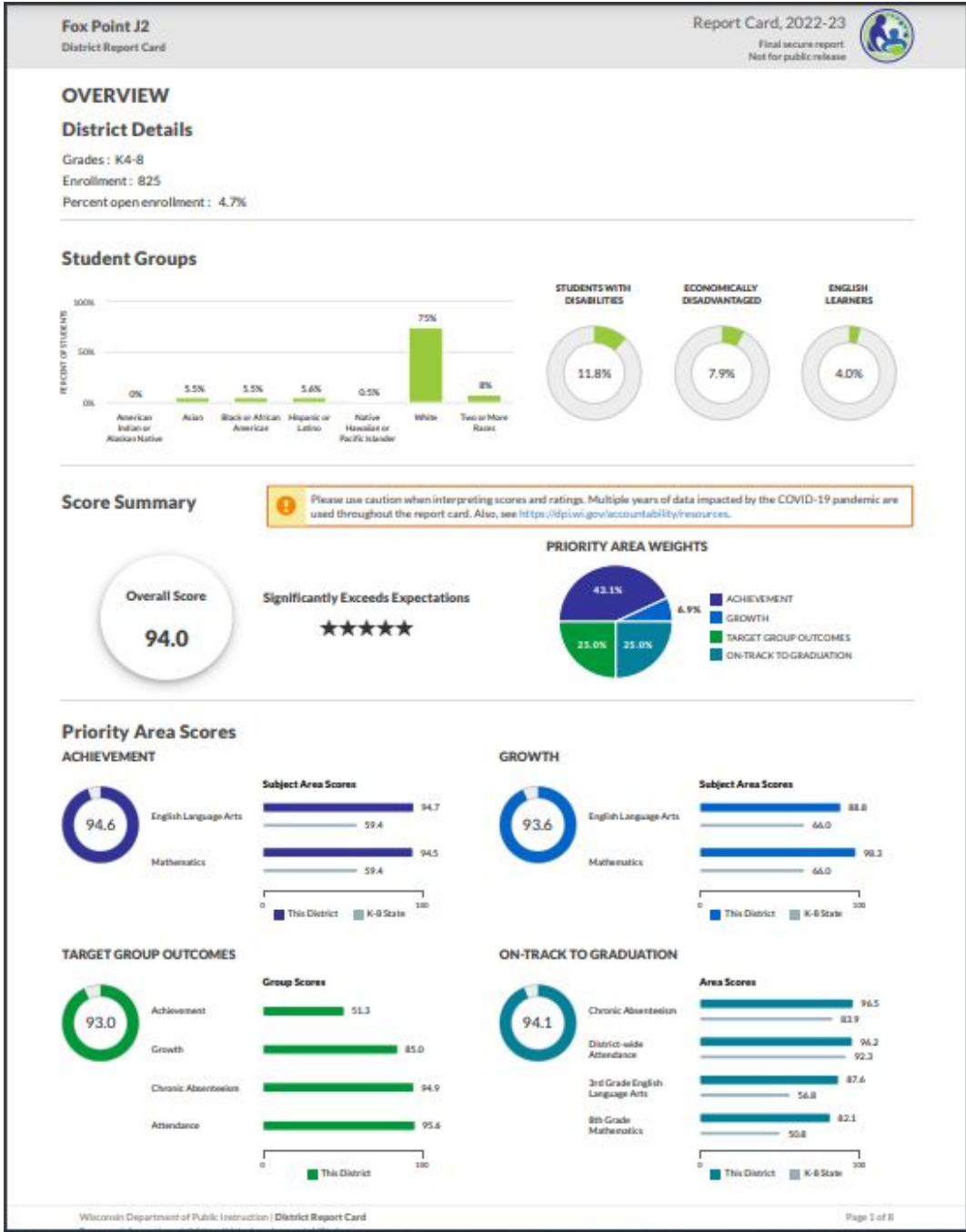
Continue to grow this area with the
focus on social and emotional
learning through RULER.



Curiosity and Engagement

Work towards our strategic
plan, Framework for our Future

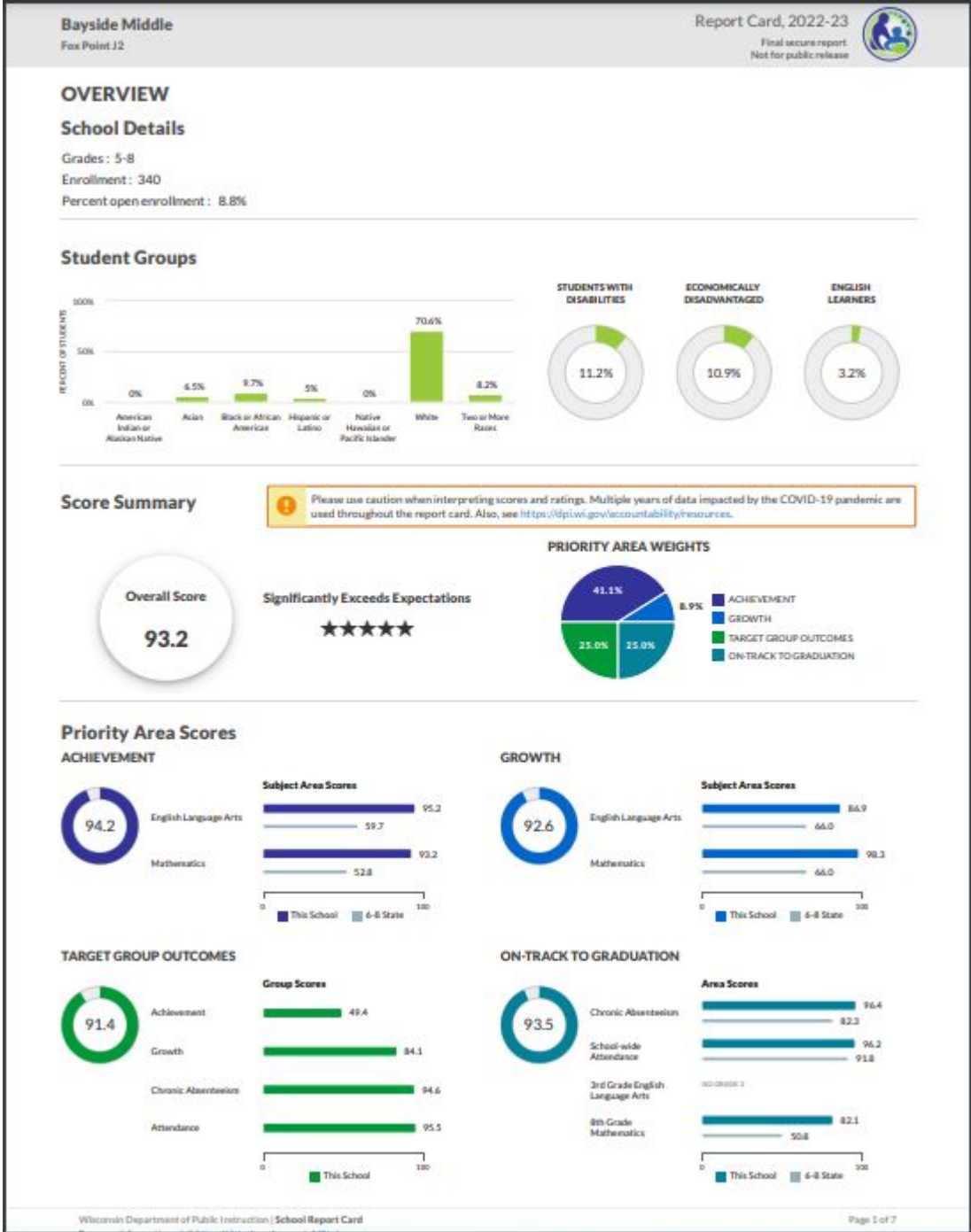
District Report Cards



District
94.0

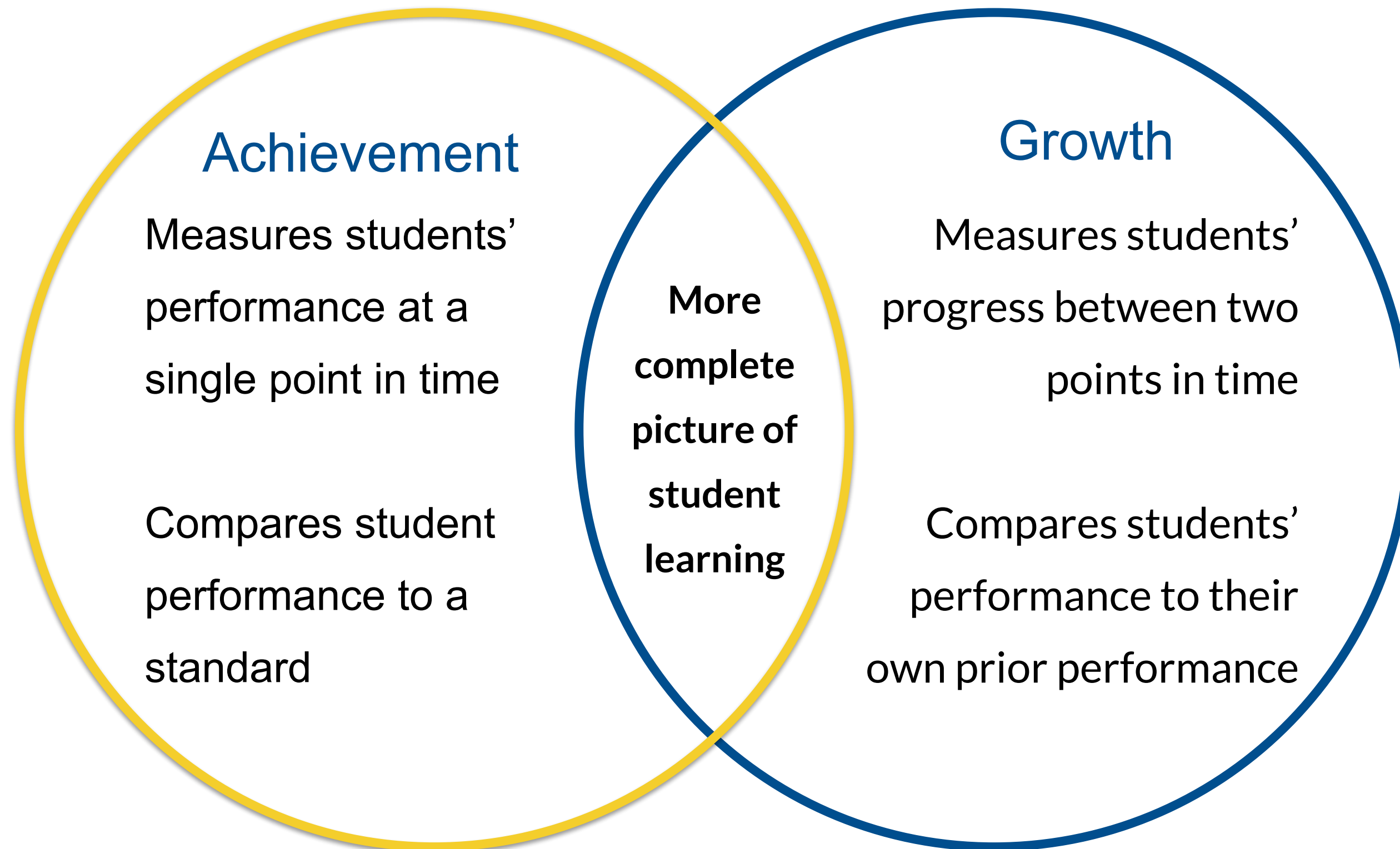


Stormonth
96.4

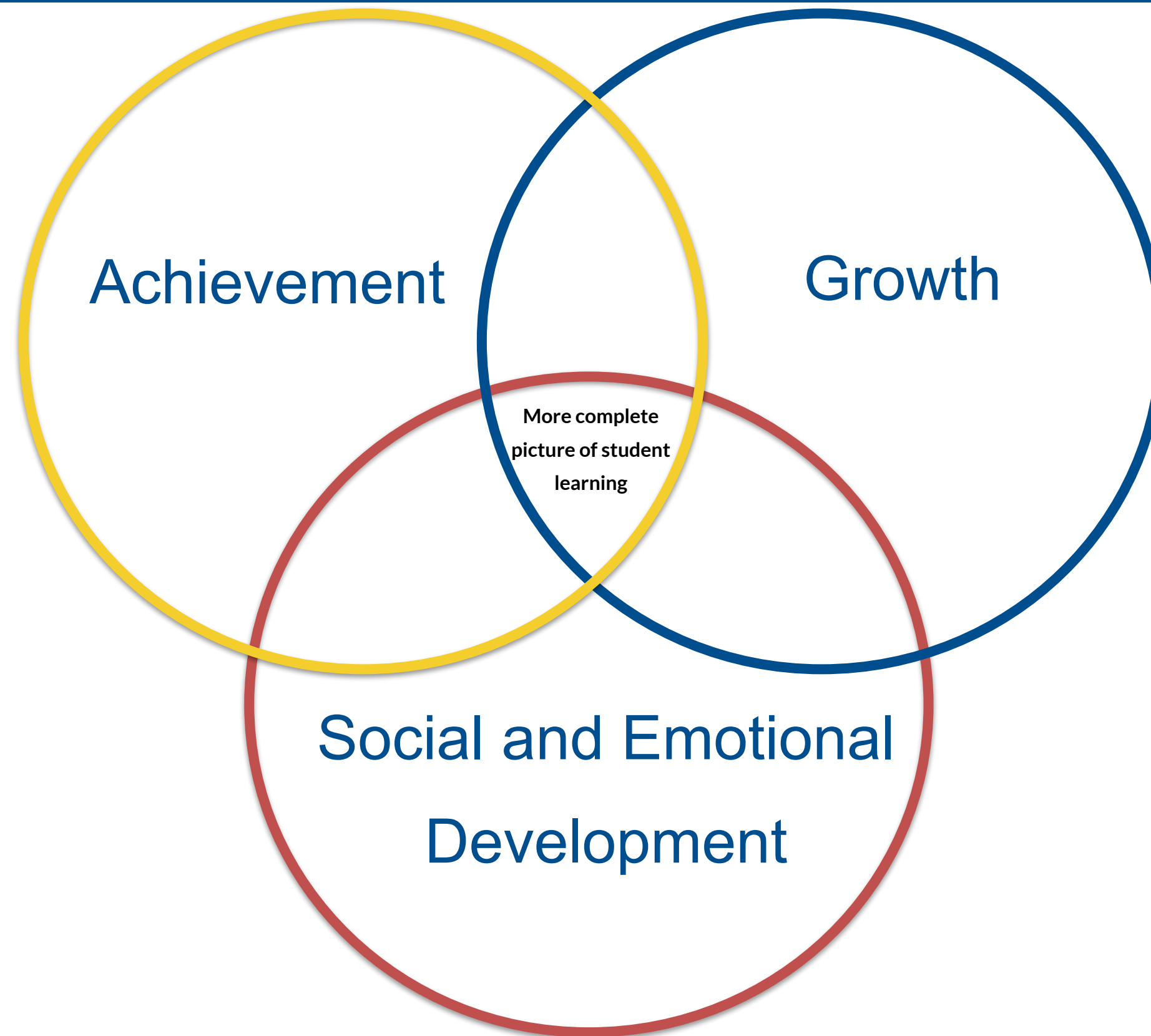


Bayside
93.2

Achievement and Growth



Whole Student Focus

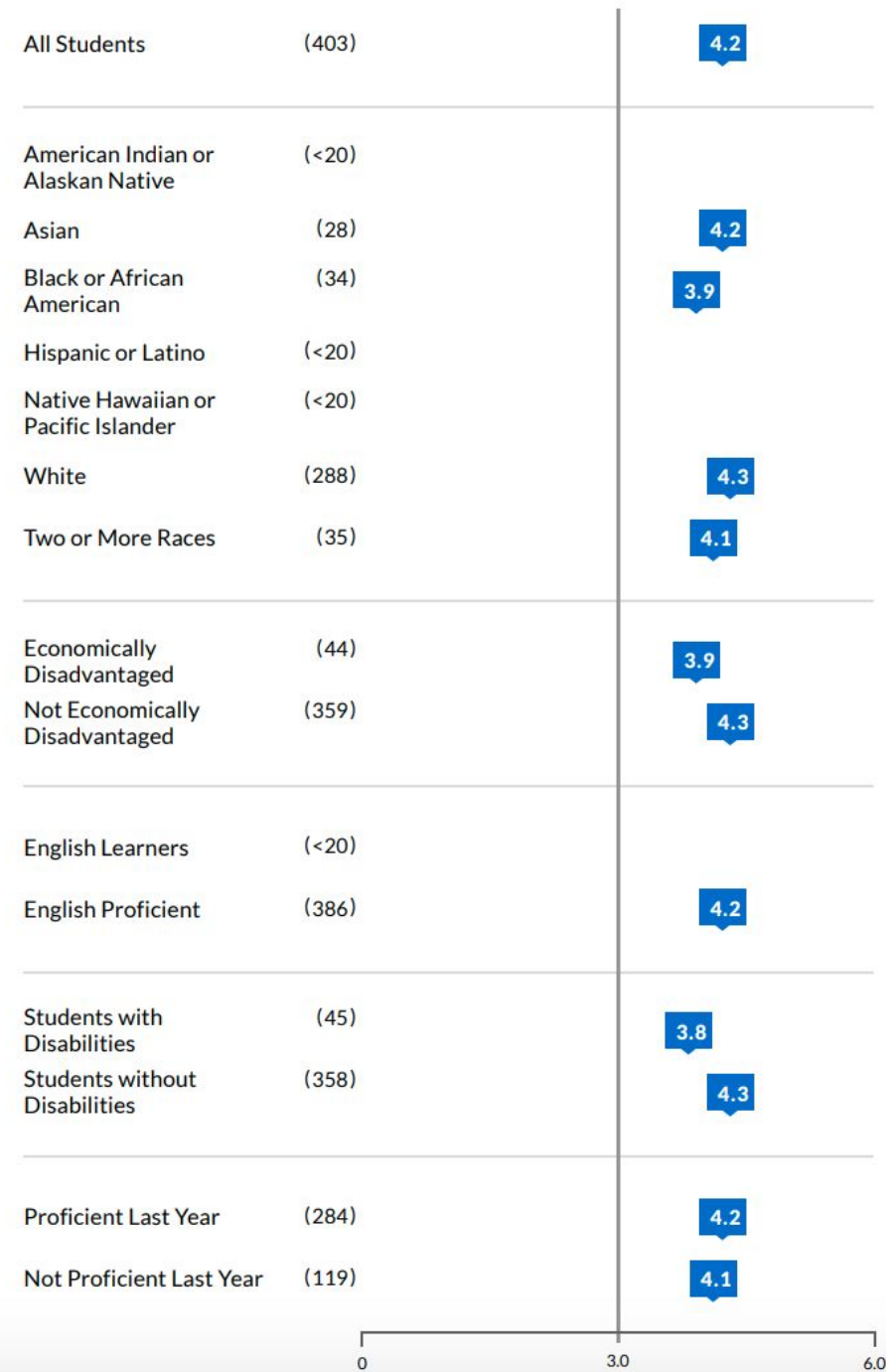


Value Add

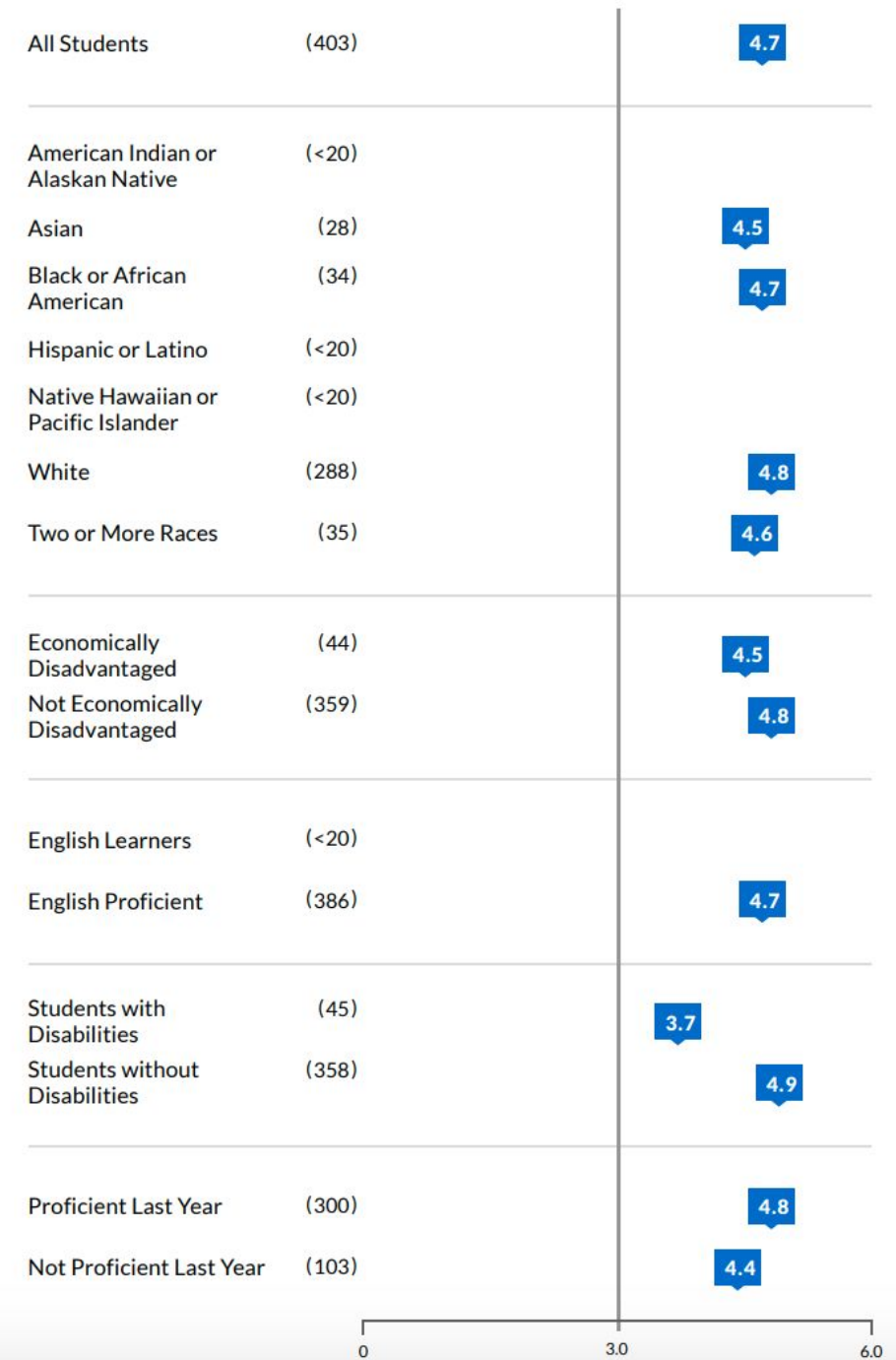
Student Group Value-Added (for information only)

Value-added scores cover an approximately 0-6 range. Higher scores mean greater positive impact. A score of 3.0 is average. Group size is shown in parentheses. Groups with fewer than 20 students do not have a score displayed. Shaded boxes indicate higher-than-average scores.

ENGLISH LANGUAGE ARTS

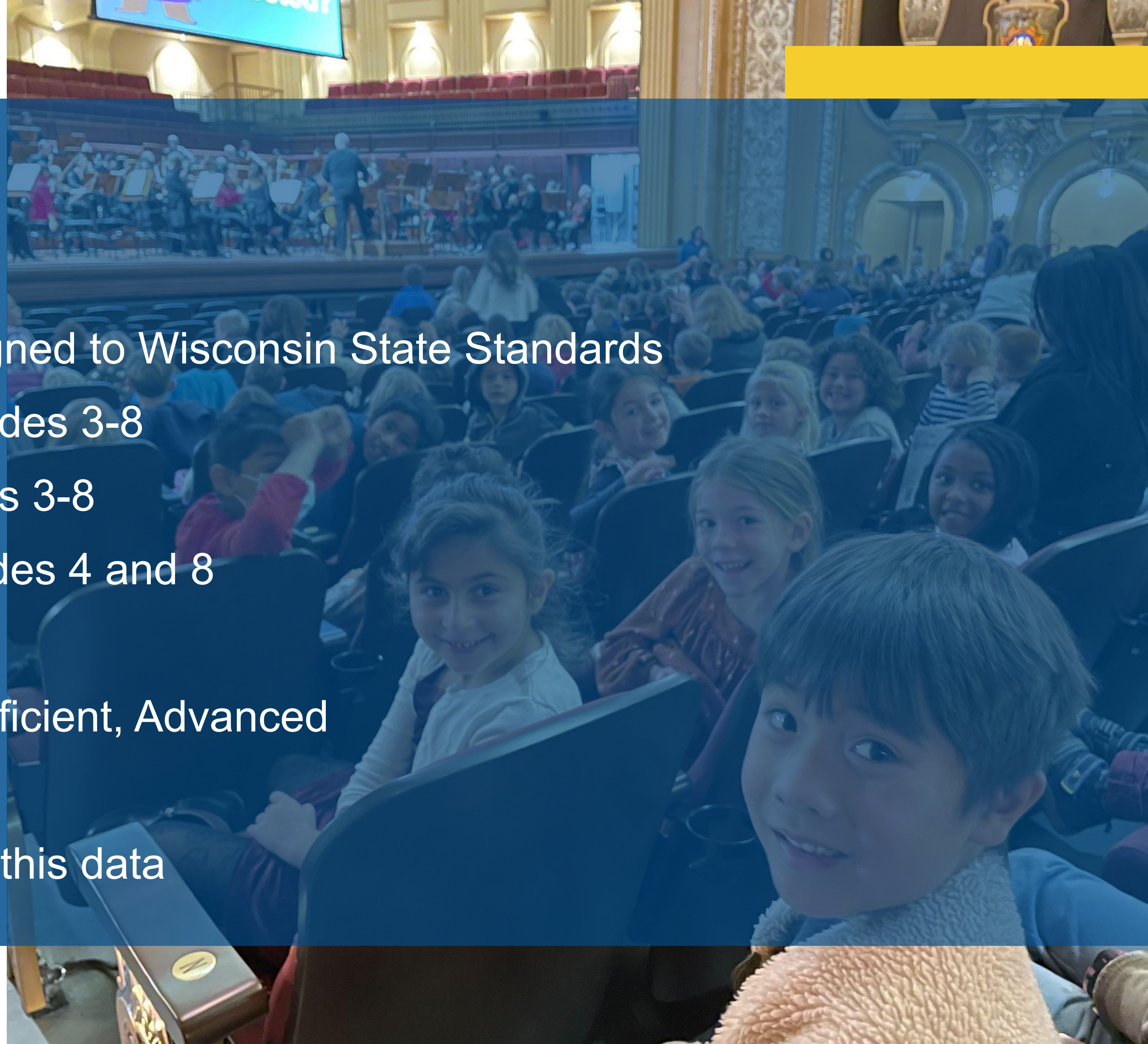


MATHEMATICS



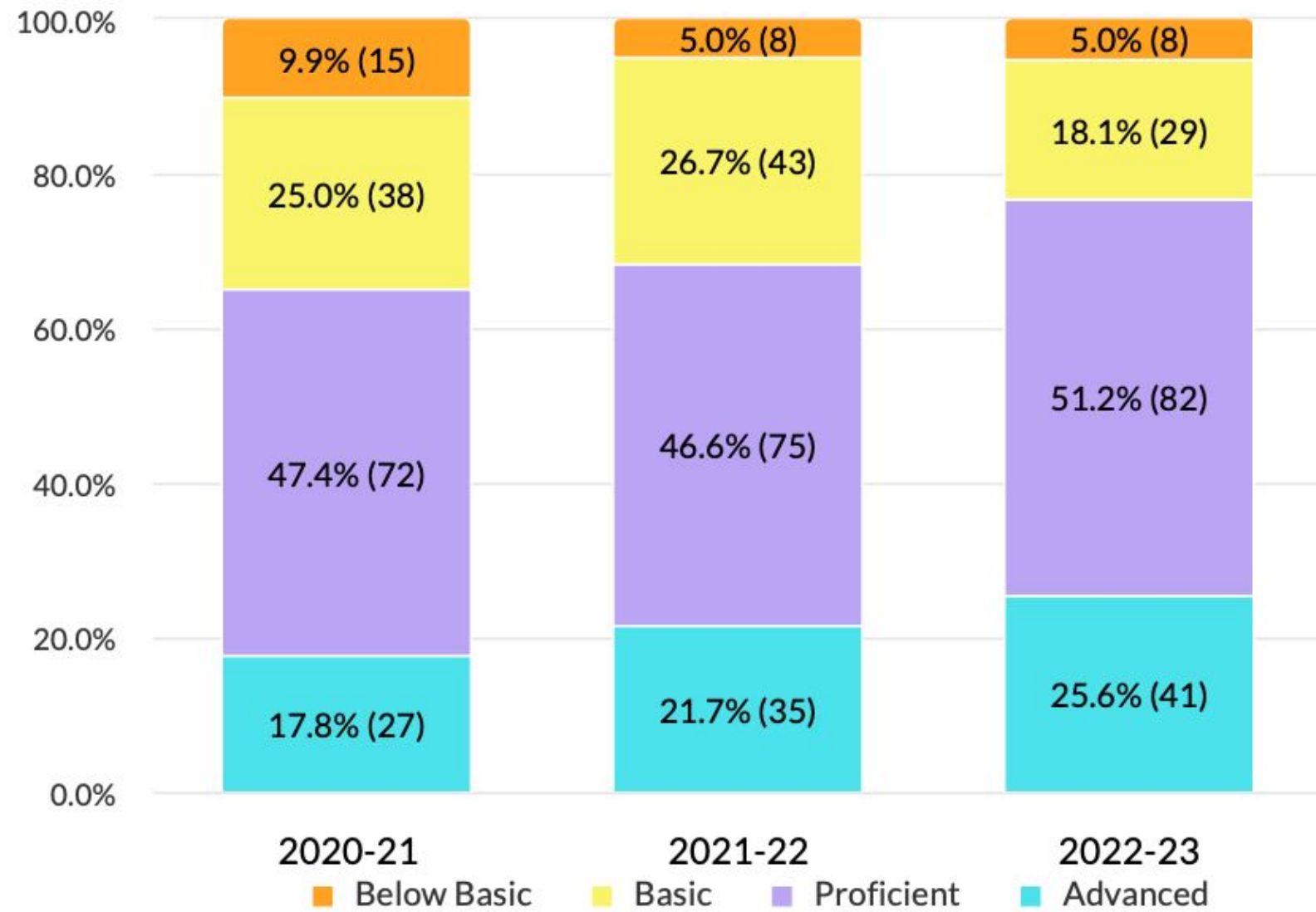
Forward Exam

- Wisconsin's State Exam, aligned to Wisconsin State Standards
- Administered Annually in grades 3-8
 - ELA and Math for grades 3-8
 - Science and SS for grades 4 and 8
- Proficiency Scale
 - Below Basic, Basic, Proficient, Advanced
- Lagging indicator
- State Report Card based on this data

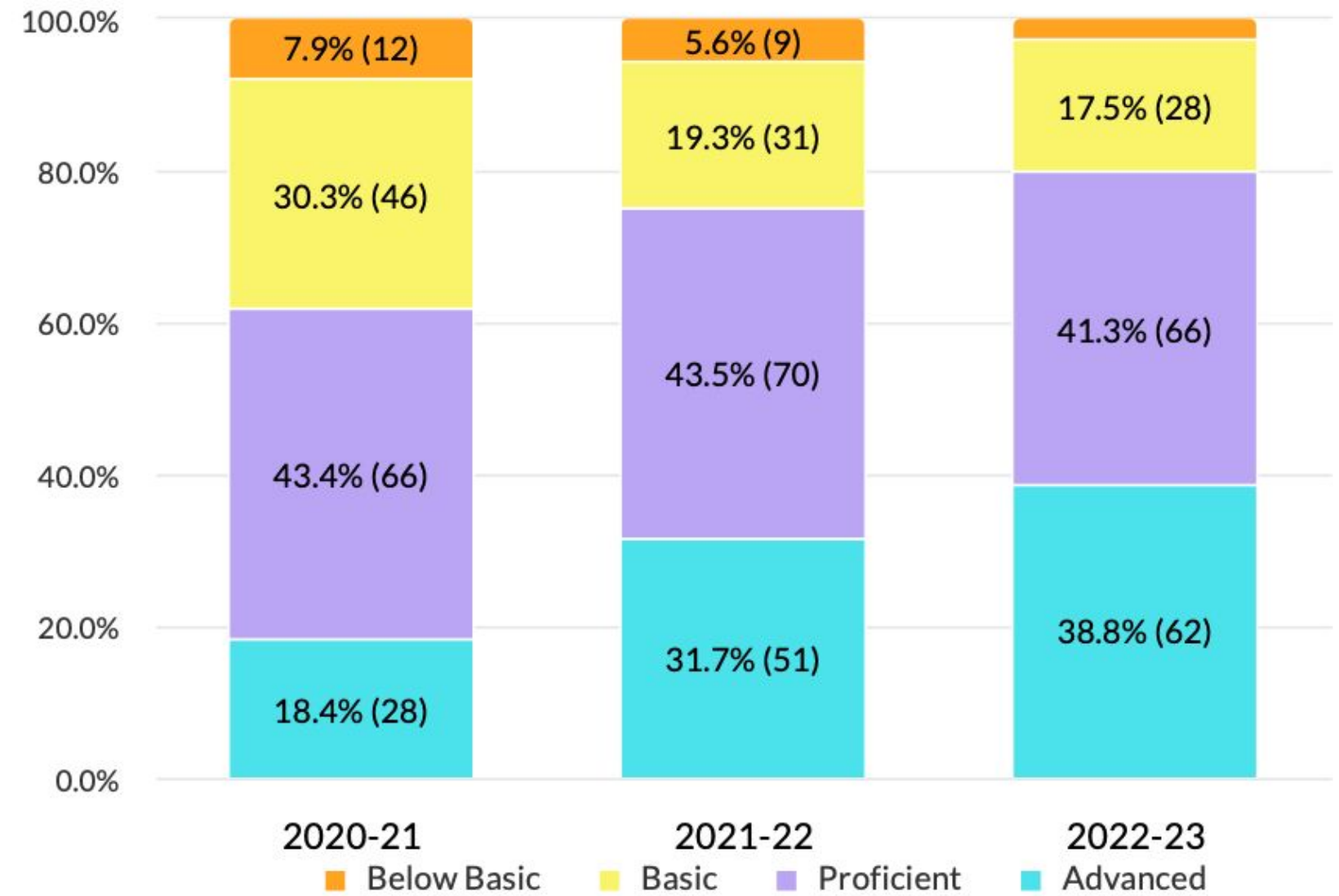


Forward Data - Stormonth

ENGLISH LANGUAGE ARTS

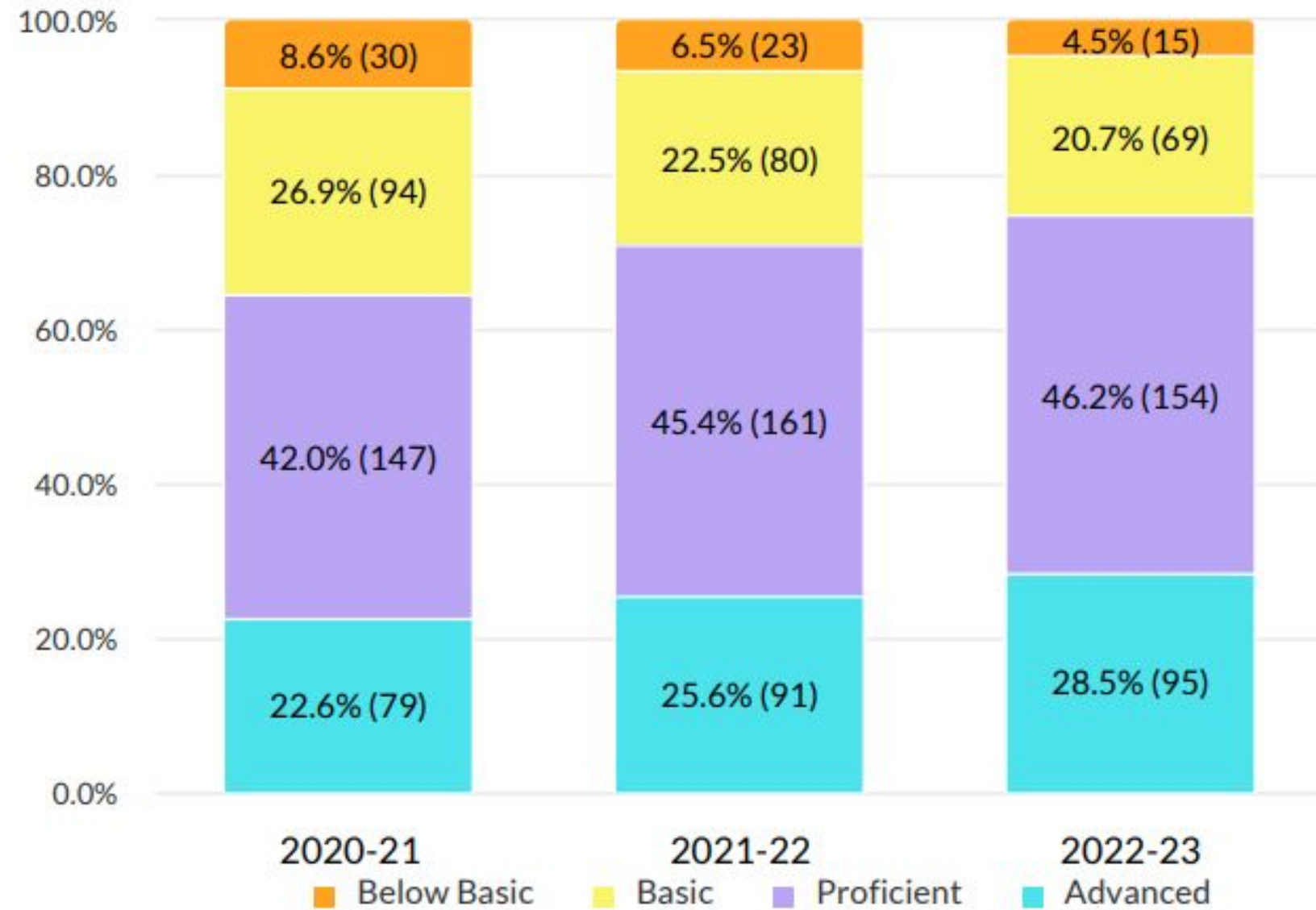


MATHEMATICS

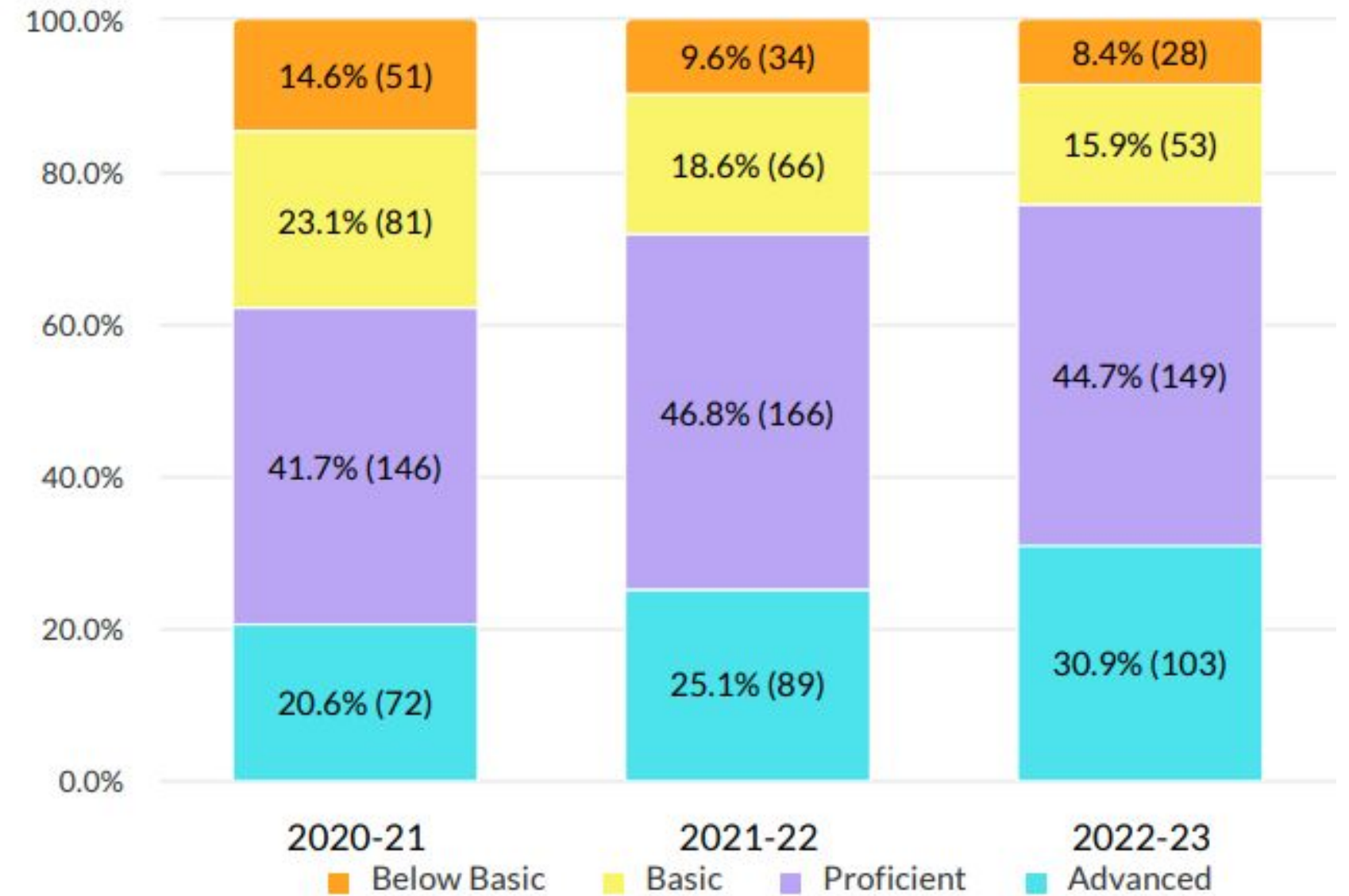


Forward Data - Bayside

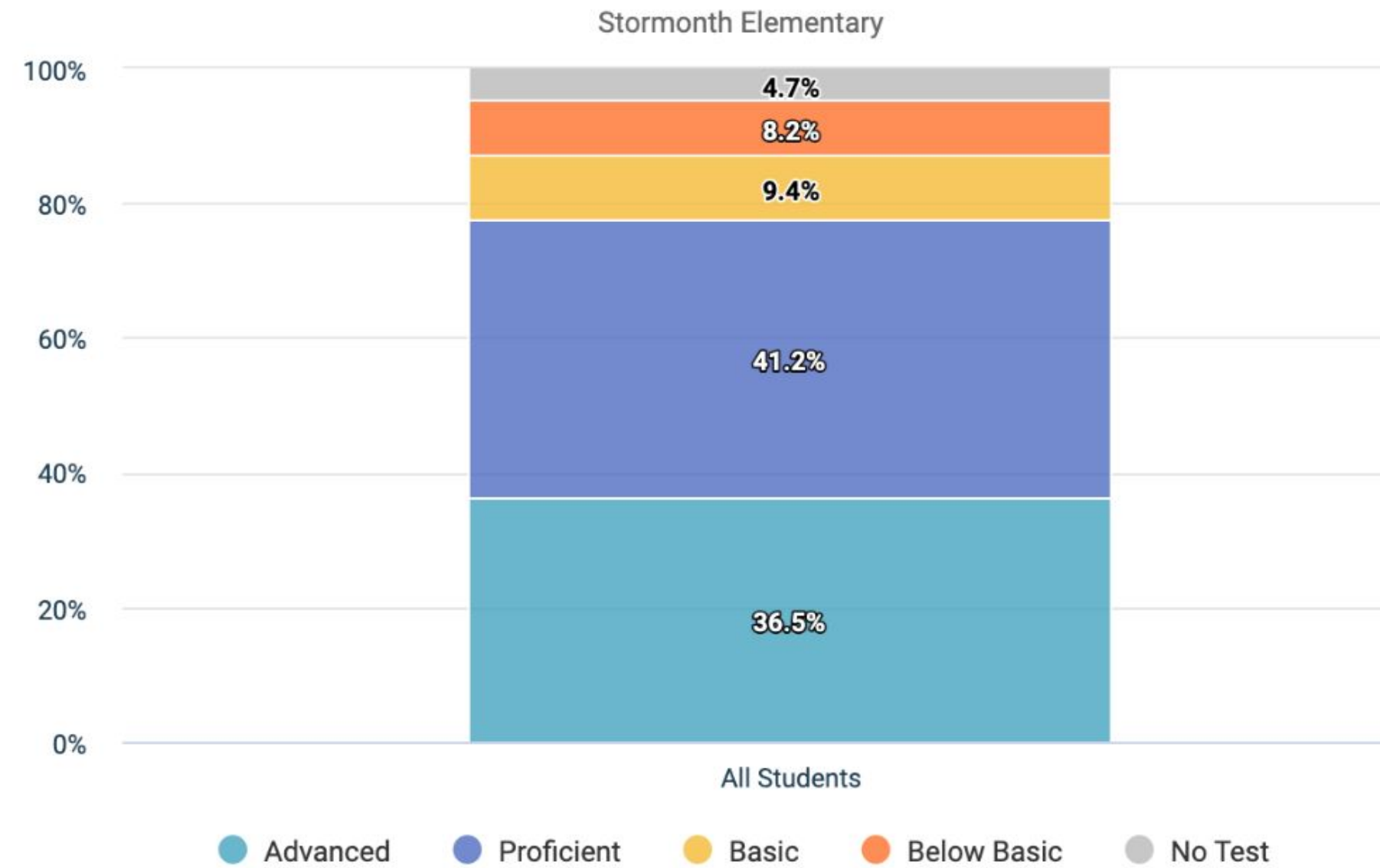
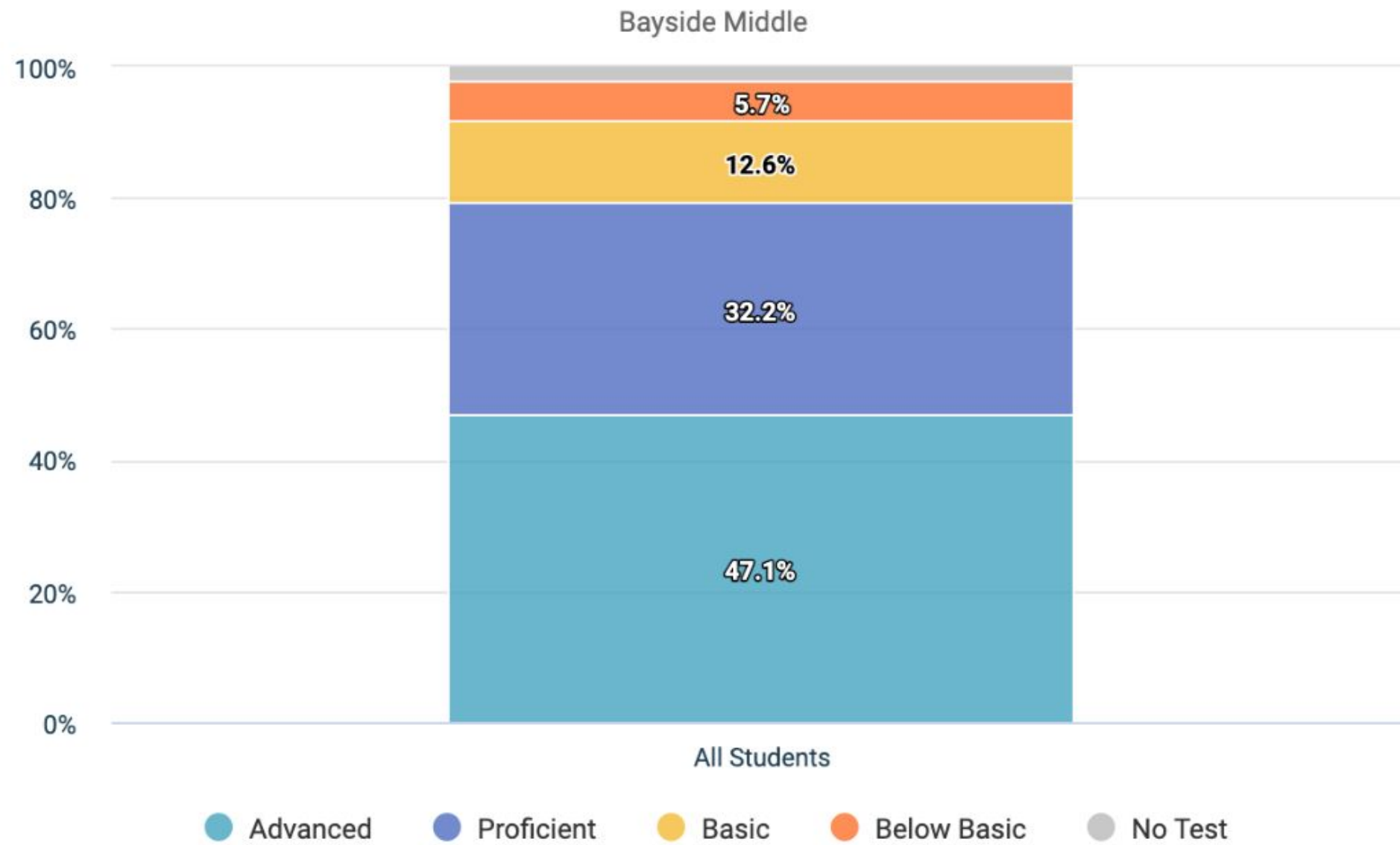
ENGLISH LANGUAGE ARTS



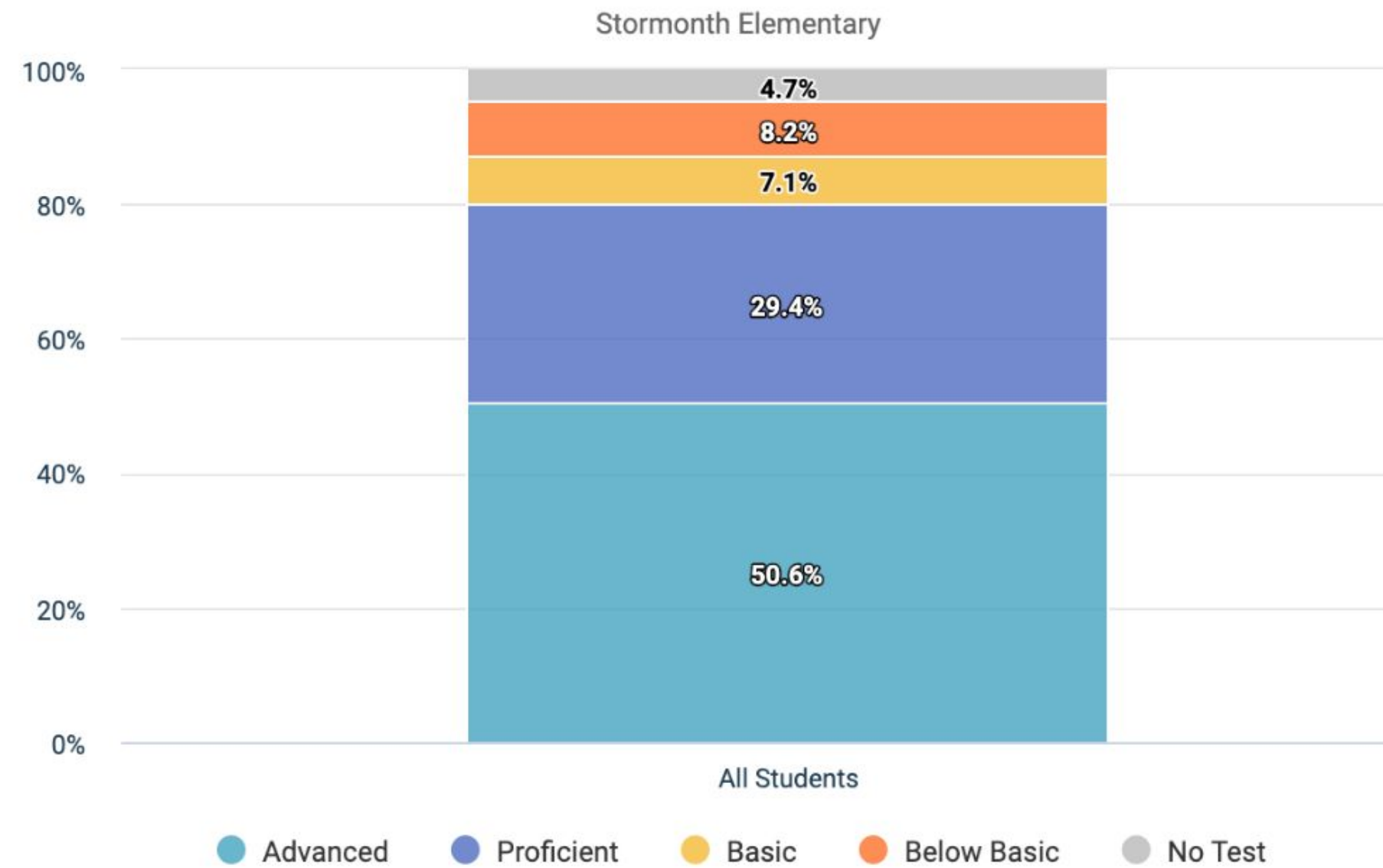
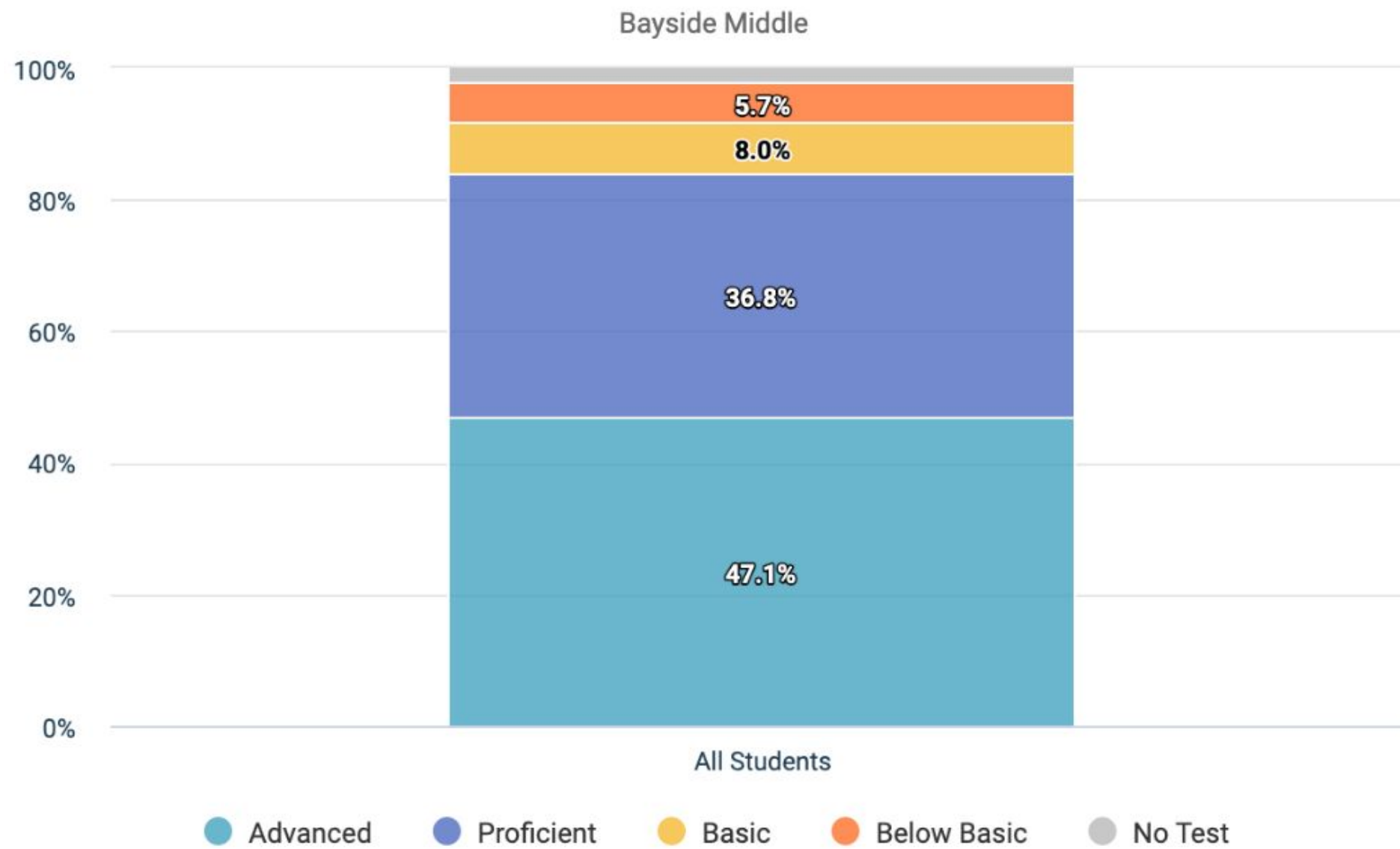
MATHEMATICS



Forward Data - Science

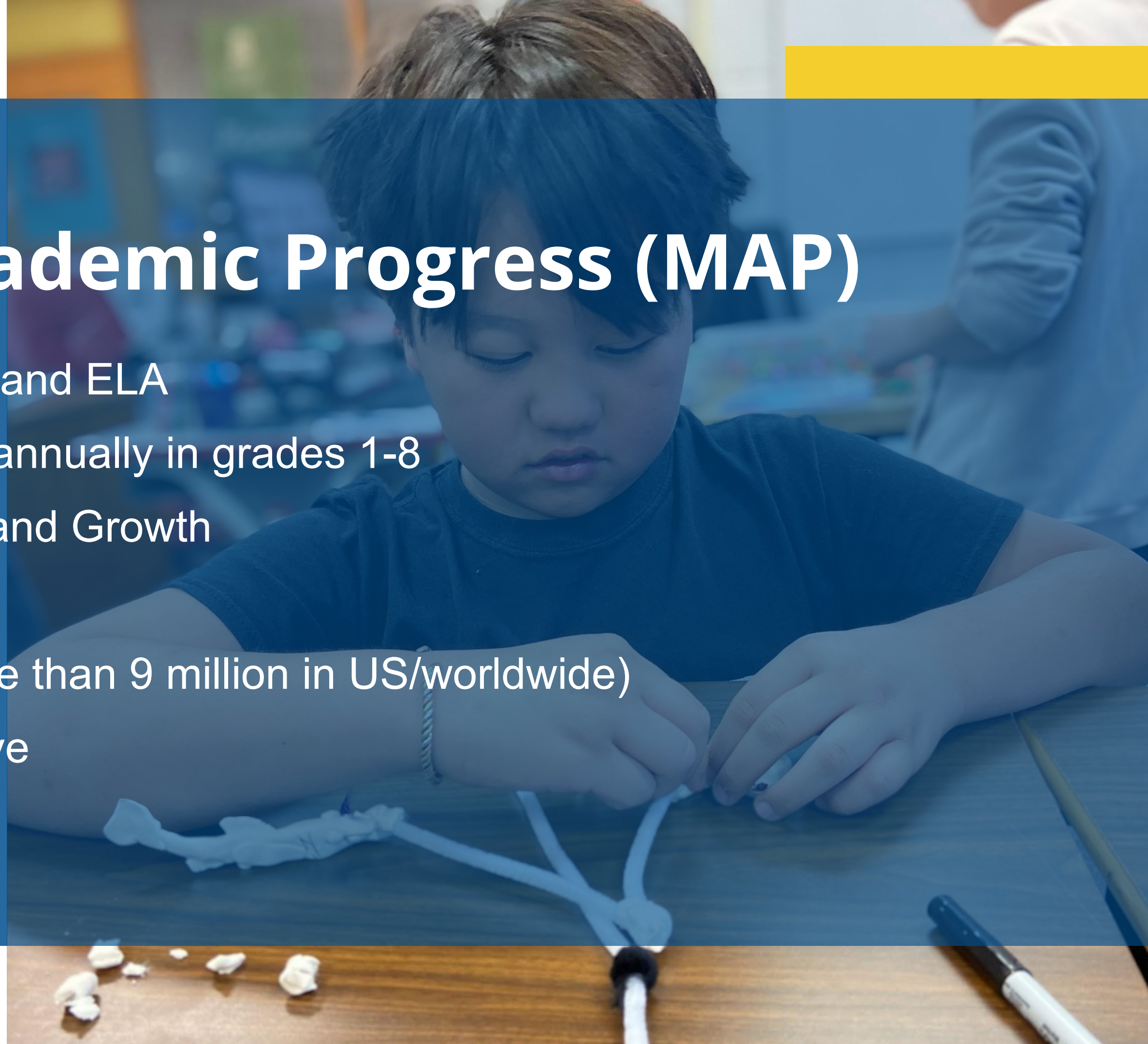


Forward Data - Social Studies

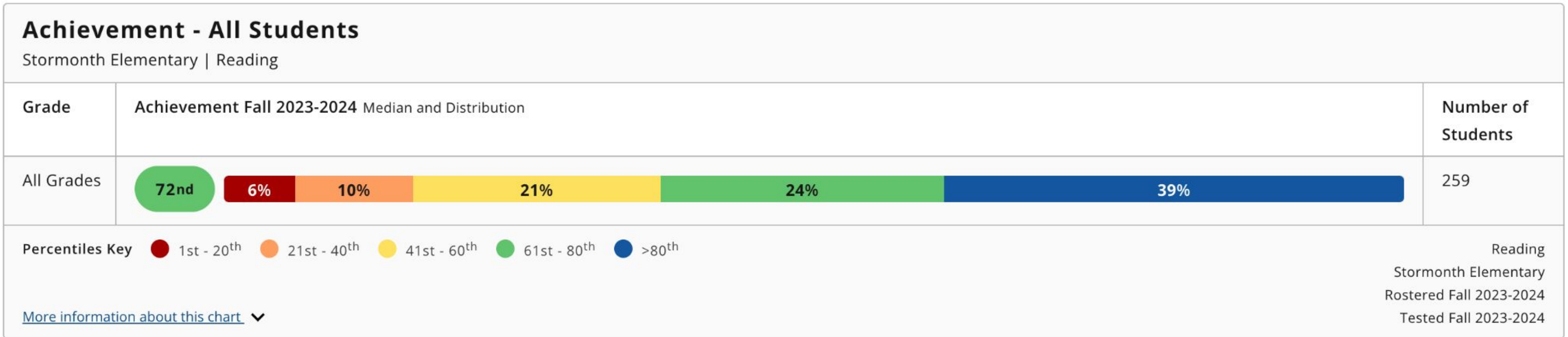
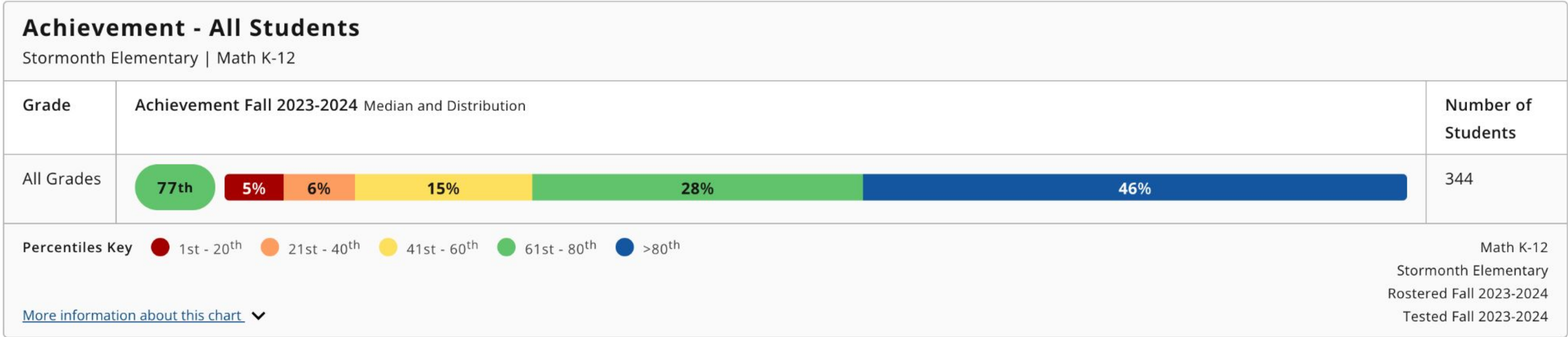


Measures of Academic Progress (MAP)

- Universal Screener for Math and ELA
- Administered multiple times annually in grades 1-8
- Provides both Achievement and Growth
- Immediate results
- Nationally normed data (more than 9 million in US/worldwide)
- Computer based and adaptive



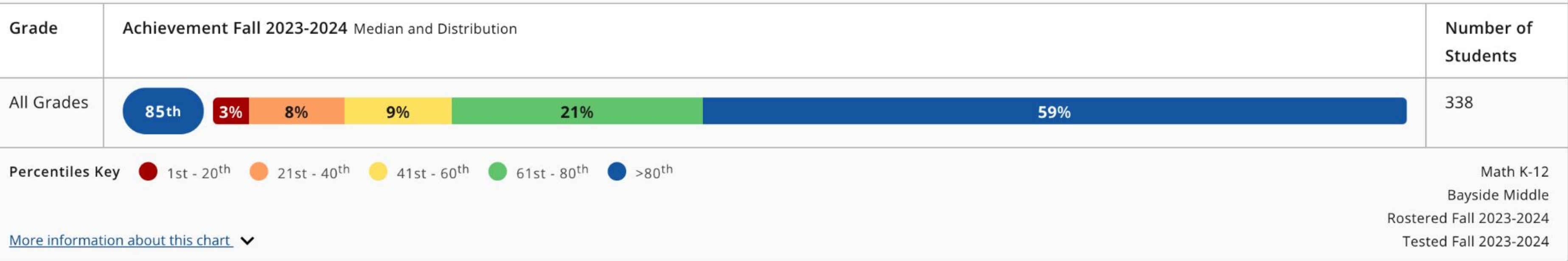
MAP Data - Stormonth Math/Reading



MAP Data - Bayside Math/Reading

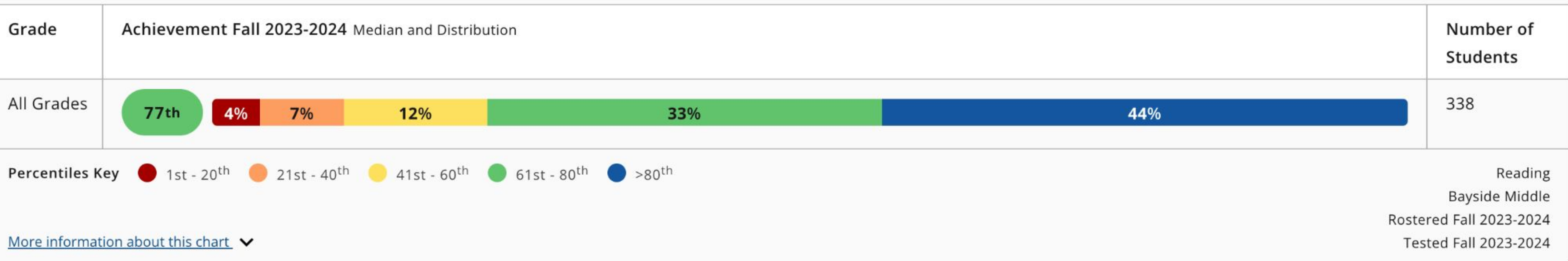
Achievement - All Students

Bayside Middle | Math K-12



Achievement - All Students

Bayside Middle | Reading



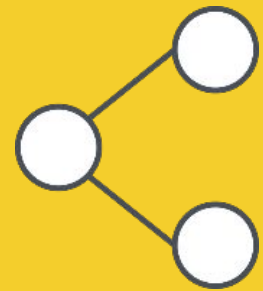
Celebrations - Student Survey Data

Question	Spring 2022	Spring 2023
2022: Learning is important at my school 2023: I believe my learning is important at my school	4.28	4.40
2022: My teachers challenge me to think 2023: I believe my teachers challenge me to think	4.06	4.17
2022: My teacher cares about me 2023: I believe my teachers care about me	4.04	4.10

Act 20 - Early Reading Readiness Bill

- Ensures core components of literacy instruction
- New assessment for grades 4K-3rd
- Specificity around assessment administration, timelines for intervention
- Required professional development for leaders and teachers
- We will know more as the year progresses

Continuous Improvement



Essential Standards

Continue to provide instructional coaching around unit planning to the essential standards, aligning our report card, preparing for future curricular review cycles



Early Literacy

Learn and understand the upcoming requirements for Act 20 and their impact on teachers, leaders and learners; Prepare communication for families



Engagement

Move from compliance to engagement, from teacher directed learning to student directed learning

FOX POINT
BAYSIDE SCHOOL DISTRICT

